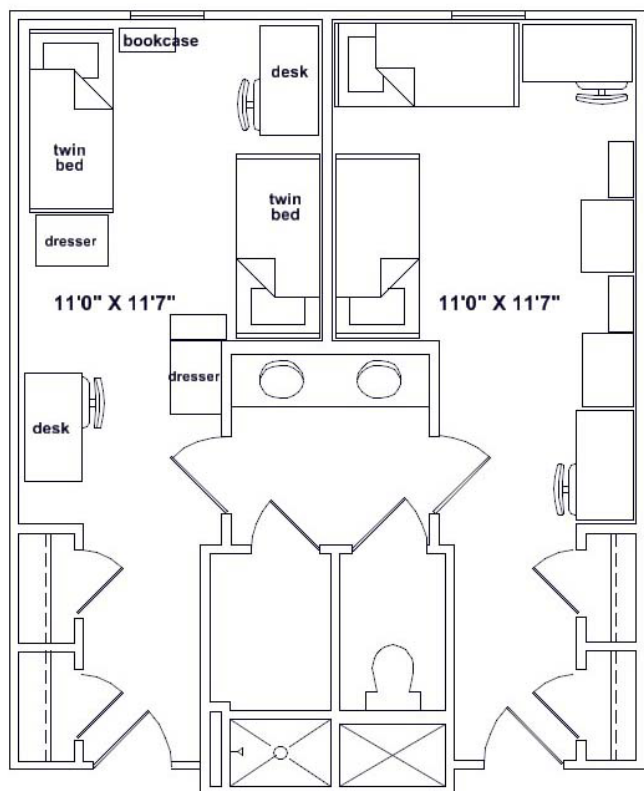


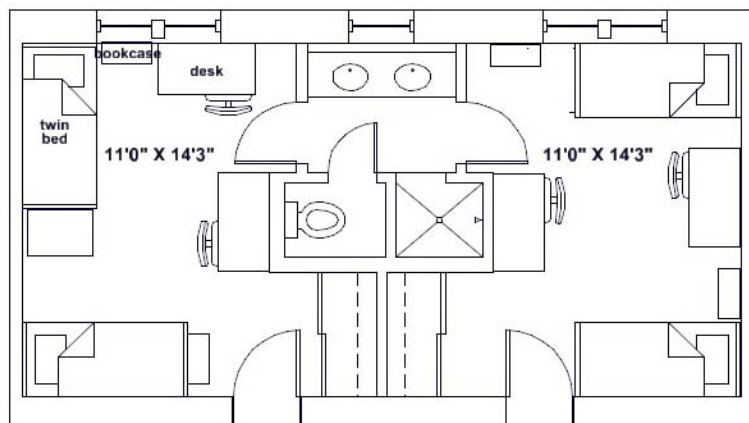
Central Campus Residence Halls

Floor Plans

Learn more at www.gcsu.edu/housing.



Typical 4-person suite in Adams, Foundation, Napier, Parkhurst and Wells Hall



Typical 4-person suite in Bell Hall

- Bed frame
3' 3" high, 3' 2" wide, 7' 1" long
- Bed mattress
Twin, extra-long, 8" high, 36" wide, 80" long
- Bed clearance (underbed storage at lowest setting)
4.5" from floor
- Bed clearance (underbed storage at highest setting)
34" from floor
- Chest of drawers
2' 6" high, 2' 5.5" wide, 2' deep
- Chest of drawers (drawers)
5.5" high, 2' 2.5" wide, 1' 8.25" deep
- Closet
8' high, 3' 10.5" wide, 1' 11" deep
- Closet shelf
5' 8" above the floor, 3' 10.5" wide, 1' deep
- Desk
2' 6" high, 4' wide, 2' deep
- Desk drawer
5.5" high, 1' 8.25" wide, 1' 10" deep
- Shelf unit
2' 6" high, 2' wide, 10" deep
- Window
5' 10.5" high, 2' 7" wide, 3" deep



**GEORGIA
COLLEGE**

GEORGIA'S PUBLIC LIBERAL ARTS UNIVERSITY

University Housing