

Printing from Personal Laptops

Laptop users can print from their personal laptops to printers with a pay for print station on campus.

In order to print you will need to download a piece of software called a 'device driver.' This allows your computer to communicate with the specific printer(s) in the building.

Once you have installed the appropriate driver you will be able to print to any of the corresponding pay for print stations on campus.

The cost for printing: 10¢ per page for black/white and 75¢ per page for color

Printing from Personal Laptops

How to Install Pharos Mobile on a PC

Please follow these step-by-step instructions. Note that these instructions apply to specific printers (Lexmark, HP or Color).

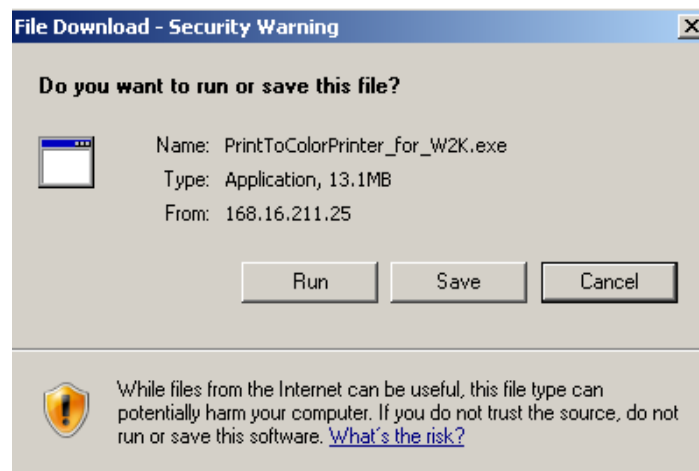
1. Click on the printer you wish to use.

[Print to HP printers](#)

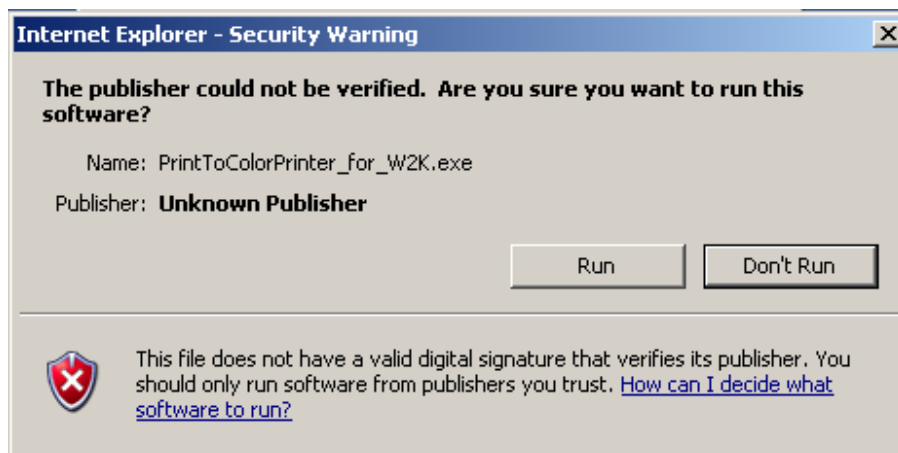
[Print to Lexmark printers](#)

[Print To Color Printer](#)

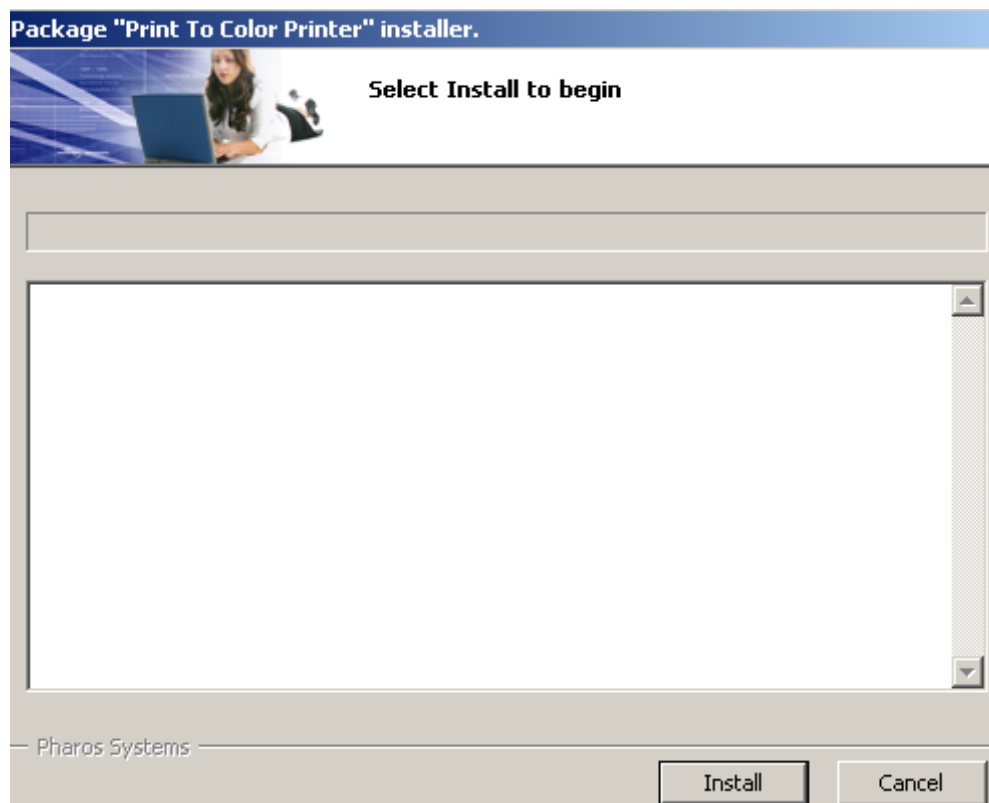
2. If an Open File-Security Warning window opens, click "Run" to proceed to the next step.



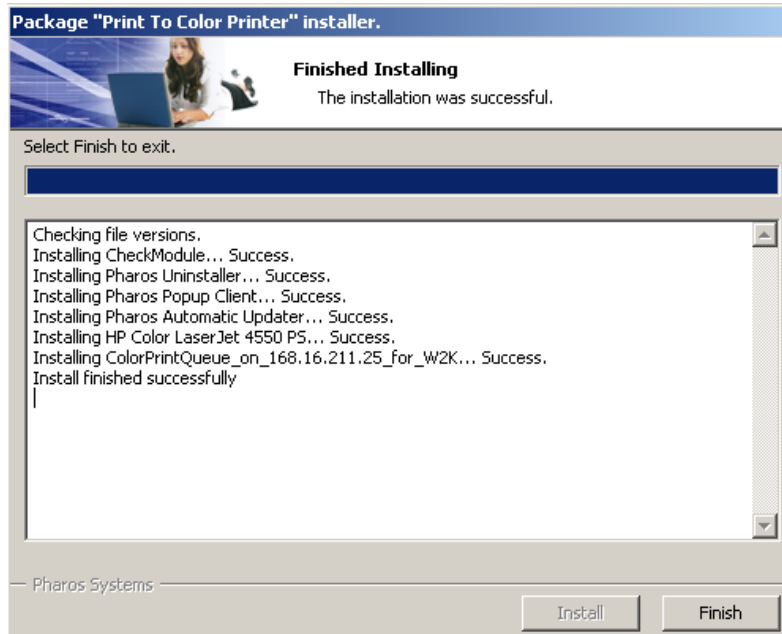
3. An Internet Explorer Security window may open. If so, click "Run" and proceed to the next step.



4. The installer for the package will begin to run. Read the End User License Agreement carefully. If you accept the terms, click "Accept" to continue the installation.
5. On the next screen, click "Install" to begin the installation.



6. When the installation completes, you will see the screen below. Click "Finish" to close the window.



7. The drivers for the printer are now installed. When you want to print a document, the printer should be listed in the "Name" drop down box. Select the options for the document you wish to print (Number of Copies, Page Range, etc.) and click "Ok."

