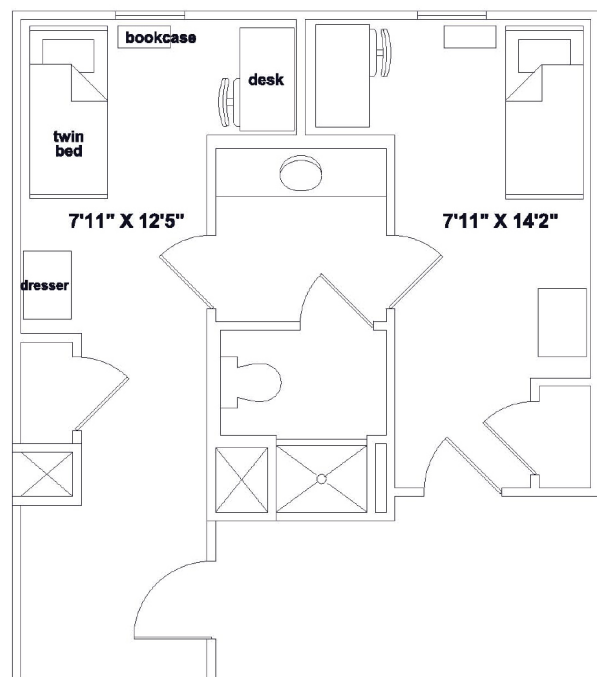
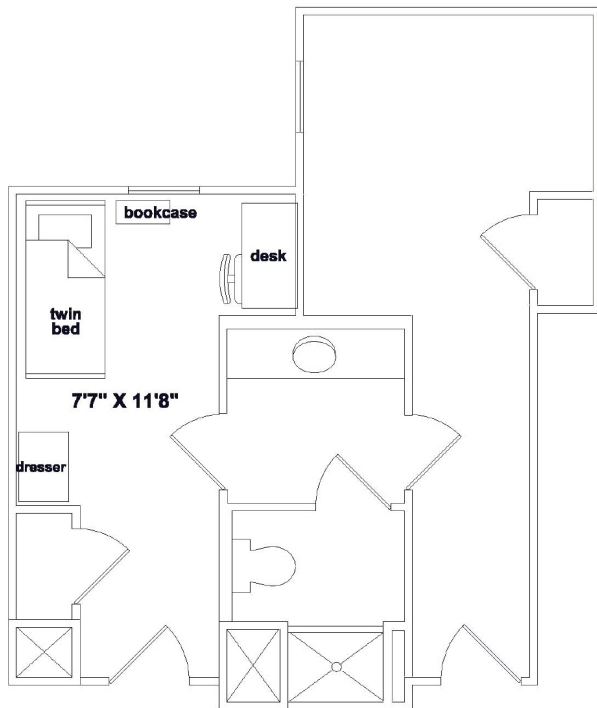


# Central Campus Residence Halls

# Floor Plans

Learn more at [www.gcsu.edu/housing](http://www.gcsu.edu/housing).

Single room dimensions vary from one room to another. Below are the two most popular single room floor plans. Your room may look different from these examples. University Housing recommends you wait until arrival to purchase large items such as futons.



Bed frame

3' 3" high, 3' 2" wide, 7' 1" long

Bed mattress

Twin, extra-long, 8" high, 80" long, 36" wide

Bed clearance

(underbed storage at lowest setting)

4.5" from floor

Bed clearance

(underbed storage at highest setting)

34" from floor

Chest of drawers

2' 6" high, 2' 5.5" wide, 2' deep

Chest of drawers (drawers)

5.5" high, 2' 2.5" wide, 1' 8.25" deep

Closet

8' high, 3' 10.5" wide, 1' 11" deep

Closet shelf

5' 8" above the floor, 3' 10.5" wide, 1' deep

Desk

2' 6" high, 4' wide, 2' deep

Desk drawer

5.5" high, 1' 8.25" wide, 1' 10" deep

Shelf unit

2' 6" high, 2' wide, 10" deep

Window

5' 10.5" high, 2' 7" wide, 3" deep

Under sink, shared space

(pipes interfere with full use of this space)

2' 4" high, 4' wide, 1' 8" deep



University  
Housing