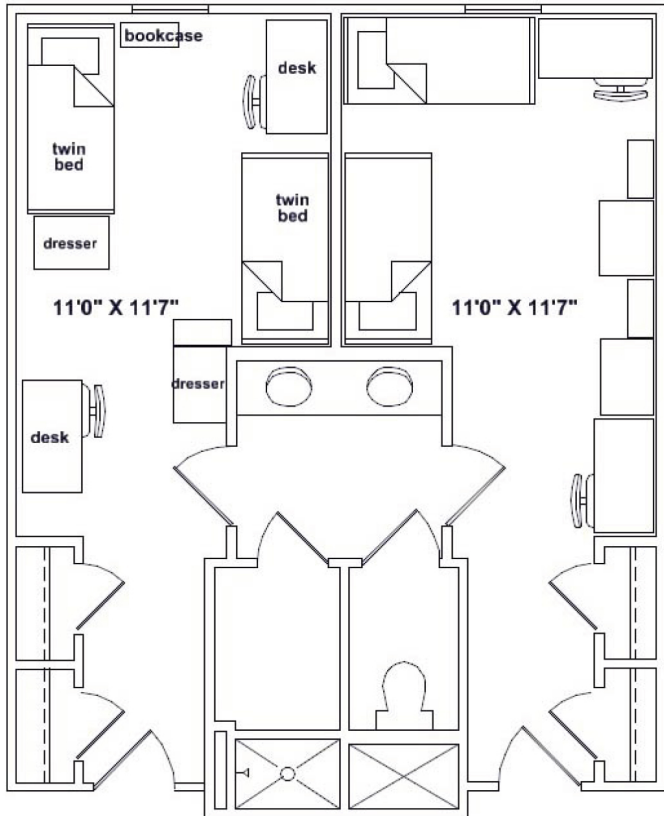


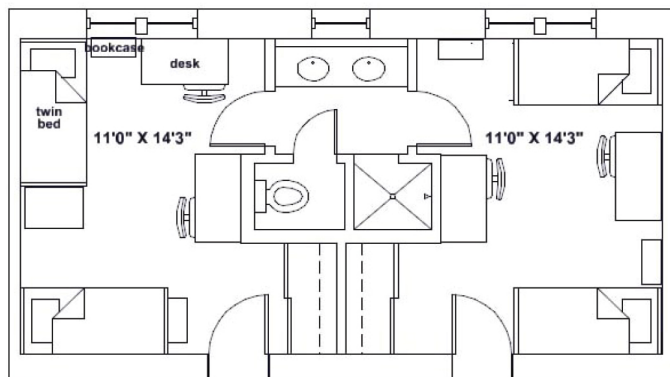
Central Campus Residence Halls

Floor Plans

Learn more at www.gcsu.edu/housing.



Typical 4-person suite in Adams, Foundation, Napier, Parkhurst and Wells Hall



Typical 4-person suite in Bell Hall

Bed frame

3' 3" high, 3' 2" wide, 7' 1" long

Bed mattress

Twin, extra-long, 8" high, 36" wide, 80" long

Bed clearance

(underbed storage at lowest setting)

4.5" from floor

Bed clearance

(underbed storage at highest setting)

34" from floor

Chest of drawers

2' 6" high, 2' 5.5" wide, 2' deep

Chest of drawers (drawers)

5.5" high, 2' 2.5" wide, 1' 8.25" deep

Closet

8' high, 3' 10.5" wide, 1' 11" deep

Closet shelf

5' 8" above the floor, 3' 10.5" wide, 1' deep

Desk

2' 6" high, 4' wide, 2' deep

Desk drawer

5.5" high, 1' 8.25" wide, 1' 10" deep

Shelf unit

2' 6" high, 2' wide, 10" deep

Window

5' 10.5" high, 2' 7" wide, 3" deep

Under sink, shared space per room

(pipes interfere with full use of this space)

2' 4" high, 3' 2" wide, 1' 8" deep



University
Housing