

August 21, 2024

Dear Dancers and Parents,

This is your information letter about ordering Nutcracker costumes. **Costume Orders are due FRIDAY, September 8th!** Check size charts! Do not rely on Amelia or the instructor to tell you what size to order. You are responsible for the size you order for your dancer.

There are three ways to order your costume.

1. **Online:** You may order costumes online at the following website:

<https://cpe.gcsu.edu/gcsu/course/course.aspx?catId=93> We prefer online payments please, for ease of our registration staff.

2. **By Phone:** Please call 478-445-5277, Monday-Friday, 8 a.m.-5 p.m. Payment by credit card can be accepted. Please confirm the correct costume and size from your e-mailed receipt.

3. **In Person:** Please visit 100 Chappell Hall at Georgia College, Continuing Education registration office to pay by cash, check, or card during regular business hours.

Please make all checks out to GCSU. ***Costume Payments are due: Friday, September 8***

**Remember to order a size up so that they may be worn in the spring concert in May!! (Creative Movement dancers will have a different costume in the spring concert). Please order UP if in any doubt!!**

Pictures of the costumes are on the bulletin boards by the dance studios.

**The cast list will be posted at both Milledgeville dance studios next TUESDAY.**

## Nutcracker Costumes 2023

### Creative Movement Classes - Baby Mice

Cost: \$72.00. Sizes: XSC- XXLC. Pink tights and pink ballet shoes.

Pink tights, pink ballet shoes for girls. Black ballet shoes for boys. We will draw on whiskers. BIG mice – costume provided.



### Ballet I Class- Angels

Cost: \$61.00. White dance tutu. Angel wings and halo are \$22.00. Hair piece and wand pictured will not be available. Sizes XSC-XXLC. Does not come in adult sizes. Pink tights, pink ballet shoes for girls. Black ballet shoes for boys. Boys will have a different costume.



**Ballet I Trumpeteers - (2 selected dancers from Ballet I, watch for cast list announcement).**  
We have these. Red leotard and hat are provided. Dancers need red ballet shoes and red tights.



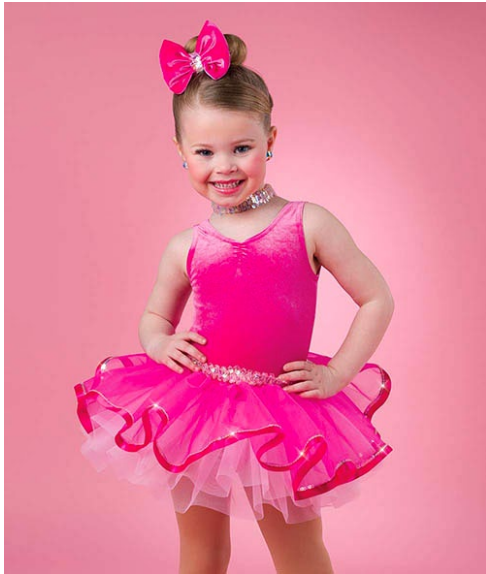
**Ballet II Class- Pollichinelles & Mother Ginger**

Cost: \$76.00. Sizes: XSC- XXLC. Pink tights, pink ballet shoes for girls. Black ballet shoes for boys. Boys will have a different costume



**Ballet II Bon Bons (4 selected dancers from Ballet II, watch for cast list announcement)**

Cost: \$56.00; \$61.00 for XLC & up; Sizes include XSC-XXLC. Dancers need pink ballet shoes, pink tights. **Instructor will assign colors: Fuschia, Lemon, Jade and Orchid.**



**Ballet III Class – Candy Canes**

Cost: \$61.00. Sizes: XSC- XXLC. Pink tights, pink ballet shoes for girls. Black ballet shoes for boys. Boys will have a different costume



**Ballet IV Class – Winter Wonderland**

Cost: \$76.00. Sizes are SC-XXLA. Pink tights, pink ballet shoes for girls. Black ballet shoes for boys. Boys will have a different costume. White muffs will be used. We already have the muffs.

**Ballet V Class – Holiday Belles**

Cost: \$86.00. Sizes XLC-XLA. Pink tights, pink ballet shoes, pointe shoes. Black ballet shoes for boys. Boys will have a different costume.



### **Ballet V class – Tea (Chinese Dancers)**

Costume is provided. Dancers need to get pink tights, and ballet shoes.



### **Ballet VI Class – Chocolate (Spanish)**

We will use the ones we already have, shown below. Costumes for this dance are provided. Tan tights, tan character shoes.



**Ballet VI Class - Waltz of the Flowers**

Cost: \$80.00. Sizes include SC-XXLA. Pink tights, pink ballet shoes, pointe shoes. Black ballet shoes for boys. Boys will have a different costume.



**Ballet VII or VIII -- Bo Peep Quartet**

We have these. Costume is provided.



### **Ballet VII & VIII classes - Snowflakes**

Cost: \$76.00. Sizes ISC-XXLA. White Romantic tutu, pink tights, head piece, lights, and pointe shoes.



### **Ballet VIII (selected dancers), Mochi (Japanese)**

We have these. Costume is provided. Pink tutu, pink tights, pointe shoes, arm puffs, and pink



headpieces. Fans - prop.

**Ballet VIII (selected dancers) – Coffee (Arabians)**

We already have the turquoise chiffon pants and accessories for the female dancers.



**Cheerleaders – Treppek (Russians)** We will use the ones we already have, shown below. Costumes for this dance are provided.



**Jazz and Hip Hop I-II classes - Dancing Elves**

Cost Top – \$61.00. Sizes: Child small – Adult XXL.

Cost Stockings - \$12.00. Sizes: Child small – Adult XXL.

Hat included.

**Both classes will wear black jazz shoes.**



**All Tap classes – “Soldiers**

Cost – \$23.00 for epaulets. You buy solid black knit pants for girls, black jeans or pants for boys, black socks, red turtle neck shirt (Walmart) worn on the outside, black tap shoes. Hot glue gold epaulets on shoulders. Hat, cheeks, and sword we will provide.



## Party Scene Adults, Teens, Children

**Ladies** will need a long 1880's style dress, no hoop skirt as it will get in the way, dress must have sleeves, fancy jewelry, hair pieces are needed, hair ornaments, fans, black character shoes, wrap if you are not the host family. **Drosselmeyer's wife** will need a purse for the Nutcracker Doll. **Nanny** will have simpler dress with hat and apron. **We have the petticoats and pantaloons.**

**Girls** need a brightly colored SOLID dress to the calf, fancy in design, no pastel colors! ( we will chose colors at first meeting of parents on rehearsal schedule, do NOT buy a dress yet), ecru lacy pantaloons, pink tights, pink ballet shoes, old fashioned rag doll, hair bow, wrap if you are not the host family.

**Men:** dark suit, white shirt, we have string ties, black shoes and socks, we have the vests!  
**Drosselmeyer** has a cape and eye patch.

**Boys:** knickers (long pants rolled under) in a fancy fabric (velvet, corduroy) , vest in a print or solid, ecru shirt with lace at cuffs and color, (from ladies department), white knee socks (from girl's department), Sunday shoes that tie. EVERYTHING must look old-fashioned - no modern day dresses!!!! ALL DRESSES MUST HAVE A SHORT OR LONG SLEEVE – NO SLEEVELESS DRESSES!!!! We have many dresses, check with us first before buying one.





### **Musical Theatre - Poinsettias**

Cost: \$75.00 ISC-LA. \$75.00 XLA-XXLA. Dancers need tan tights and tan character shoes. We provide white gloves.



## **Soloist costumes (provided by GC)**

### **Sugar Plum Fairy**



**Snow Queen**



**Dew Drop Fairy & Demi Soloists**



**Arabian Soloist** - We have this red costume for both dancers. GC has bottoms and accessories. Dancer purchases red bra to decorate



**Spanish soloist** – We have this as shown below. Dancer needs tan tights and black character shoes.



**Ballet III Soloist, Candy Canes** – We have this as shown below.



**Japanese** - We have this as shown below.



**Chinese** - We have this as shown below.



**Winter Wonderland** - We have this as shown below.



**Holiday Belles** - We have this as shown below.



**Pollichinelles Soloist, or another tutu**





**Kingdom of Sweet dancers** - Dancers will wear the costume from their solo or class piece.



**Dream Fairies & Soloist** - We have these as pictured. This includes long white romantic length tutus, wands, and wings. Th soloist wears the pink tutu and leotard pictured. Dancers provide pink tights and pointe shoes.



**Nutcracker & Baby Dolls** – We have these. Baby dolls pictured in red velvet tutus with pink tights and pointe shoes or ballet shoes. Nutcracker pictures in mask and red tunic. The Nutcracker needs to provide black tights and ballet shoes.



**Harlequin Dolls** – We already have these. Little Harlequins wear the checkered hat and unitard. Big Harlequins will wear the checkered tutu. Dancers need to get pink tights and black jazz shoes.



**Reindeer that pull the sleigh** - We have the shirts, antlers, and harness as pictured. Dancers need ballet shoes and red tights.





# Size Charts

All measurements are listed in inches.

Girl Child Sizes										
	2T	XXSC XX-Small Child	XSC X-Small Child	SC Small Child	ISC Intermediate Small Child	MC Medium Child	IMC Intermediate Medium Child	LC Large Child	XLC X-Large Child	XXLC* XX-Large Child
Girth	34 - 36	36 - 38	38 - 40	40 - 44	44 - 46	46 - 48	48 - 51	51 - 54	54 - 56	56 - 59
Bust	18 - 20	19 - 21	21 - 23	23 - 26	25 - 27	27 - 29	28 - 30	29 - 32	34 - 36	36 - 38
Waist	18 - 20	19 - 21	20 - 22	22 - 24	22 - 24	23 - 24	24 - 25	25 - 26	30 - 34	34 - 37
Hips	18 - 20	19 - 21	21 - 23	23 - 27	26 - 29	28 - 30	30 - 32	32 - 34	36 - 38	38 - 40
Inseam	13	15	16	19	22	23	25	27	27	27
Arm	12	14	15½	17¼	17¼	20	21½	22¼	22¼	23¾
Hem				24	25	26	28	30	31	33½

Girl Teen Sizes							
	SA Small Adult	MA Medium Adult	LA Large Adult	XLA X-Large Adult	XXLA* XX-Large Adult	3XLA* XXX-Large Adult	4XLA* XXXX-Large Adult
Girth	54 - 57	57 - 60	60 - 63	63 - 66	66 - 69	69 - 72	72 - 75
Bust	32 - 34	34 - 37	37 - 40	40 - 44	44 - 47	47 - 50	50 - 53
Waist	24 - 25	25 - 28	28 - 31	31 - 35	35 - 39	39 - 44	44 - 48
Hips	34 - 36	36 - 39	39 - 42	42 - 46	46 - 49	49 - 54	54 - 58
Inseam	29	30	31	32	32	32	32
Arm	23¼	24¼	25¼	26¼	26¼	26¼	26¼
Hem	31	34	35	36	37½	38½	40

Guy Sizes											
	2T	XXSC XX-Small Child	XSC X-Small Child	SC Small Child	MC Medium Child	LC Large Child	SA Small Adult	MA Medium Adult	LA Large Adult	XLA X-Large Adult	XXLA* XX-Large Adult
Girth	34 - 37	37 - 39	39 - 43	43 - 47	47 - 51	51 - 57	57 - 60	60 - 63	63 - 66	66 - 69	69 - 73
Chest	18 - 20	20 - 21	21 - 23	23 - 26	26 - 29	29 - 34	34 - 37	37 - 40	40 - 44	44 - 47	47 - 50
Waist	18 - 20	20 - 21	21 - 22	22 - 24	23 - 24	24 - 28	28 - 31	31 - 34	34 - 38	38 - 41	41 - 44
Hips	18 - 20	20 - 21	21 - 23	23 - 28	28 - 30	30 - 34	34 - 37	37 - 40	40 - 44	44 - 47	47 - 50
Inseam	13	15	18	21	25	29	32	34	35	36	36

\*XXLC, XXLA, 3XLA and 4XLA garments cannot be returned, exchanged or canceled, so order carefully.