

# A Place for Everything... and Everything in its Place.

[Architect Charles Cluskey](#) designed The Old Georgia Governor's Mansion in Milledgeville, Georgia in High Greek Revival style. Here are drawings of the Mansion's floor plan. Look over each drawing and try to answer the questions listed. Some are easy while others may take you a little while to figure out!

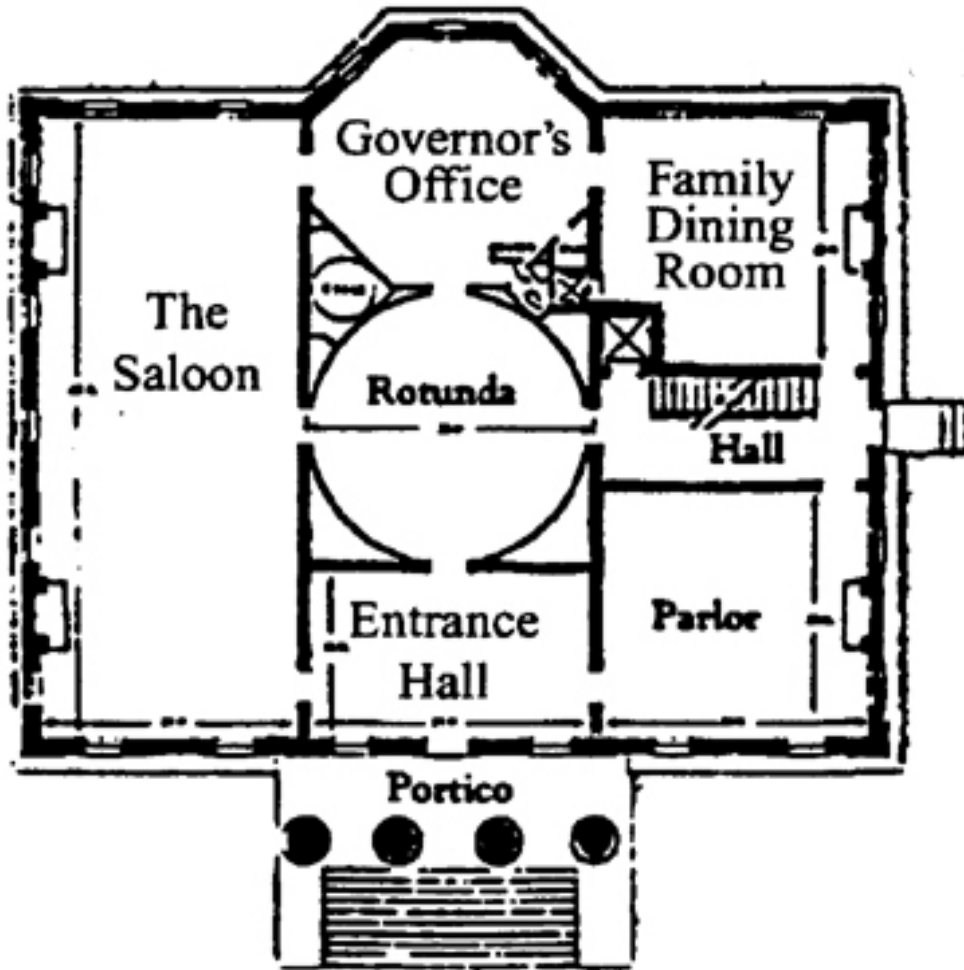
## Ground or Bottom Floor



1. What is a house steward?
2. Why did the house steward get his own room?
3. Do you remember the name of the house steward mentioned during your tour?
4. Why did the mansion have a "Cold Storage Room"?
5. What dangers were present in having a kitchen attached to the mansion?
6. Why is there a back staircase that goes down to the bottom floor?
7. For what type of events would the State Dining Room have been used?

## First or Main Floor

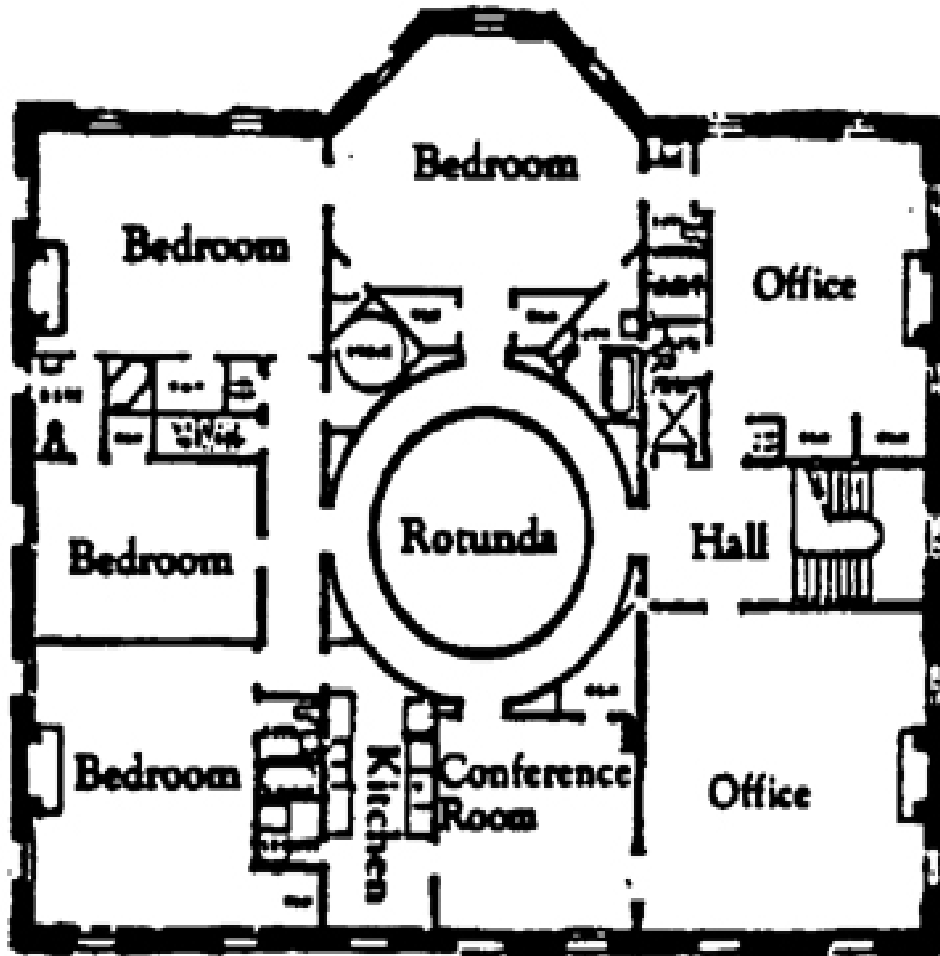
*A Place for Everything...  
and Everything in its Place.*



1. What purposes did the Entrance Hall serve?
2. Why do you think the Rotunda was placed between the Entrance Hall and the Governor's Office?
3. What is the purpose of the Rotunda?
4. What room did the ladies typically use for socializing?
5. What room did the gentlemen typically use for socializing?
6. Why did the family have a separate dining room? Why didn't they just use the State Dining Room on the bottom floor?
7. What features of the Governor's Office set it apart from the other rooms in the house?

**Second or Top Floor**

*A Place for Everything...  
and Everything in its Place.*



1. Why do you think there is a small bedroom attached to the larger one in the back left corner of this floor?
2. Which bedroom do you think belonged to the Governor and his wife?
3. Why might there have been an additional kitchen on this floor? Hint: Think about the different purposes the Mansion has served throughout its history.
4. How many bedrooms total could have been on this floor? Ignore the labels.
  5. Which bedroom would you want to have for yourself?
  6. Why is there a fireplace in each room?
  7. Why are windows so important in a house from this time period?