



WELCOME



**GEORGIA
COLLEGE
& STATE UNIVERSITY**

MOVE-IN INFORMATION

WELCOME

to University Housing and Residence Life

In less than a month you will be moving into your new residence hall or apartment, and your college career will begin. Here's what you need to know about moving in.

Move-in will take place on
Thursday, August 7.

To check in, bring your photo ID (Bobcat Card) to your assigned hall's check-in location or, for residents of The Village, the West Campus Center.



Select a Move-In Time

An email with instructions for selecting your check-in time will be sent to your bobcats.gcsu.edu email address in late July. Select from several time slots.



Move-In Tips

- Remember to bring your photo ID (Bobcat Card) and loading zone pass, which is included in this mailer.
- Bringing a hand truck or cart from home will make move-in a breeze.
- Just bring the basics, then fill up the room over the next few weeks.
- Bring a plastic drop cloth or tarp to cover items in case of rain.
- You should mark all boxes and items with name, building and room number.
- Avoid overpacking boxes and totes to reduce weight. Heavier items can be difficult to carry up stairs.
- A University Housing Welcome Book containing information about the campus and Milledgeville will be available at check in.

VENDORS



SWAKu - Care Packages

SWAK University Services provides care packages that provide your student extra support during the sometimes stressful transition to college and help your student start their academic year off right. Check out SWAKu today!



DormCo – Room Accessories

Shop at Dormco for comforters, bedding packages, decorations and room accessories of all kinds. Mattresses in the residence halls and 8-person suites at The Village are twin x-long (36 inches by 80 inches). Mattresses in 4-bedroom apartments at The Village are full-size.



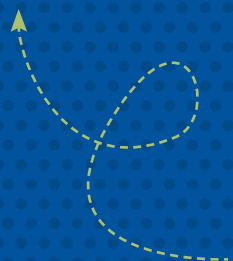
GradGuard – Renters Insurance

GCSU does not assume any legal obligation to pay for injury to person or loss or damage of personal property including any personal items that are stolen or damaged. GradGuard Renters Insurance is a smart, low cost investment for college students and their families as it provides protection for personal belongings as well as financial or unintentional damage to your residence or bodily injury to others for which you could be liable.



College Products – Furniture Rentals/Purchase

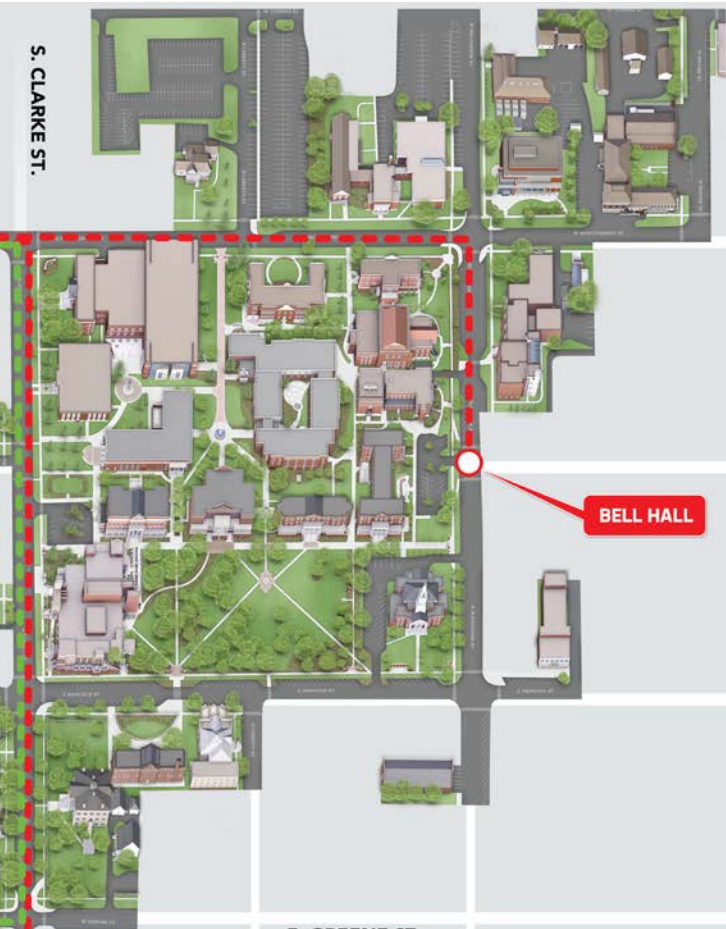
GCSU has partnered with College Products to provide even more options for students to create a home away from home. Available products include lofts, mini-fridges and safes.



MOVE-IN MAP



S. CLARKE ST.



BELL HALL

E. GREENE ST.

Central Campus
check-in at your building

West Campus
check-in at the West Campus Center

NAPIER HALL

S. CLARKE ST.



**HOUSING AND
RESIDENCE LIFE**

GEORGIA COLLEGE & STATE UNIVERSITY

WHAT TO BRING

| ✓ | Check List |
|---|---|
| | Personal paperwork (<i>Social Security card, copies of prescriptions and insurance</i>) |
| | Medications |
| | Pillow, sheets and comforter |
| | Mattress pad/cover (<i>twin XL-long on Central Campus and 8-person suites at The Village</i>) |
| | Cleaning supplies |
| | Trash can and trash bags |
| | Toilet paper |
| | Toiletries and towels |
| | Plunger |
| | Shower curtain and rings (<i>not provided by GC Housing</i>) |
| | High Efficiency (HE) laundry detergent |

| ✓ | Check List |
|---|---|
| | Clothes hangers |
| | Curtains and tension rods (<i>mini-blinds are provided</i>) |
| | 3M Command adhesive hooks |
| | Surge protectors |
| | Desk lamp |
| | Flashlight |
| | Coffee maker with internal heat device |
| | Dishes and utensils |
| | Mini-fridge |
| | Microwave |
| | HEPA Filter/Room Air Purifier |
| | Bike lock |
| | Non-adhesive drawer liners |

The Village Apartment Needs

| ✓ | Check List |
|---|---|
| | Pots and pans |
| | Kitchen trash can and trash bags |
| | Kitchenware |
| | Full-size bedding for 4-bedroom apartments, twin XL bedding for 8-person suites |
| | Small appliances |



You can find the dimensions to your room, sizes for furniture and floor plans to all of our halls at:
gcsu.edu/housing/floor-plans-and-dimensions



THINGS TO LEAVE HOME

| ✕ | DO NOT BRING |
|---|---|
| ✕ | Alcohol |
| ✕ | Tobacco and vaping devices |
| ✕ | Illegal drugs |
| ✕ | Fireworks |
| ✕ | Weapons of any kind, including airsoft guns, are prohibited |
| ✕ | Cooking equipment with exposed heating elements (<i>toasters, hot plates, hot plate style coffee makers, George Foreman grills, air fryers, etc.</i>) |
| ✕ | Halogen lamps |
| ✕ | Electric heaters |
| ✕ | Candles and incense |
| ✕ | Nails and screws |
| ✕ | Wall paper and contact paper |
| ✕ | Dart boards |
| ✕ | Out-of-season clothes |
| ✕ | Homemade lofts |
| ✕ | Pets, other than fish |
| ✕ | Mounting brackets (<i>students are charged for damaged walls</i>) |



Before move-in, please visit gcsu.edu/housing/community-expectations and review the University Housing Handbook.



Campus Box 60
Milledgeville, GA 31061

MOVE-IN INFORMATION

**SCAN
HERE!**



**DOWNLOAD
THE RAVE
GUARDIAN APP**

FOLLOW US ON



PRESORTED
FIRST CLASS MAIL
U.S. POSTAGE
PAID
MAIL SORT
MACON 31201