

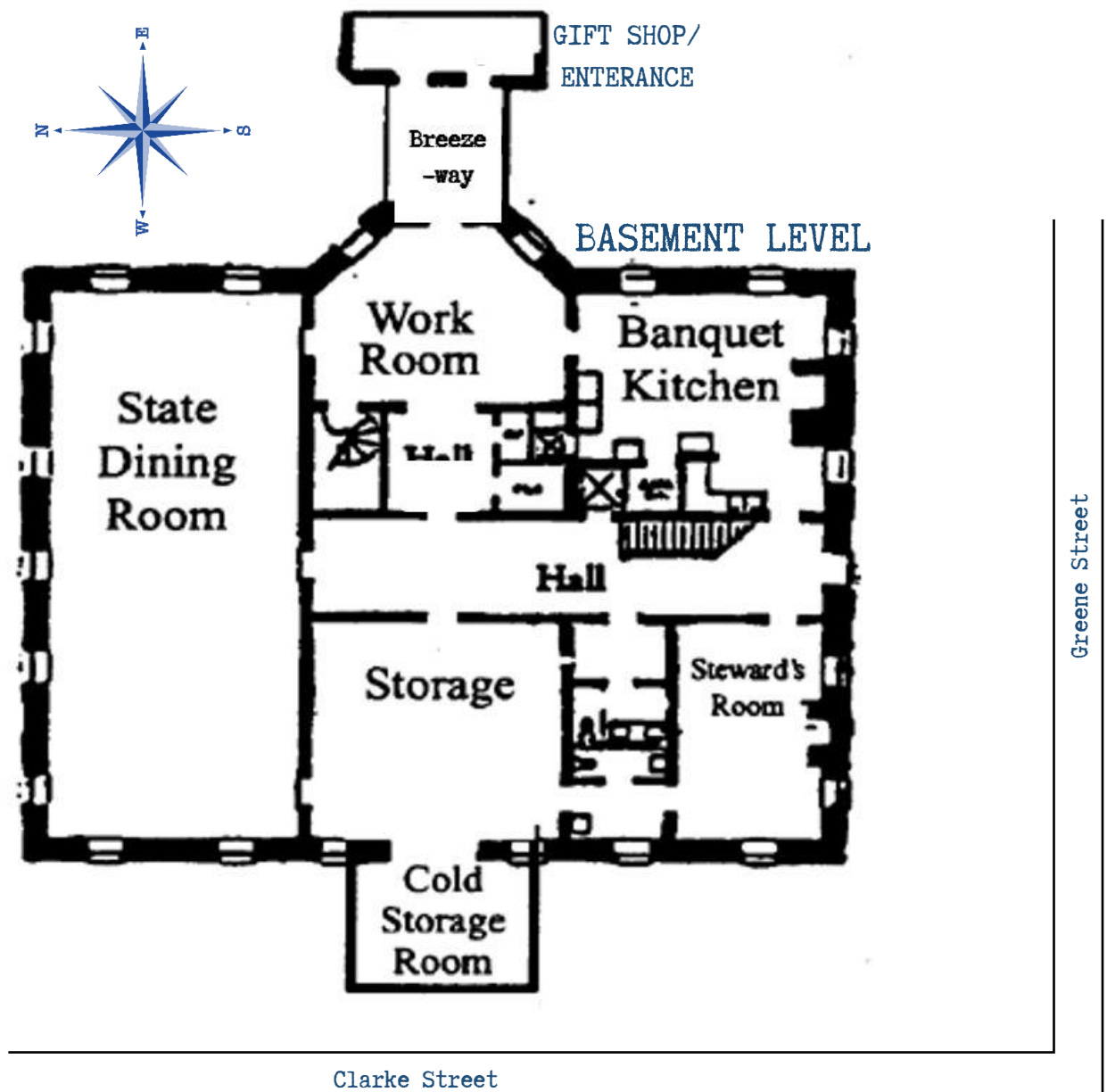
Visitor's Guide

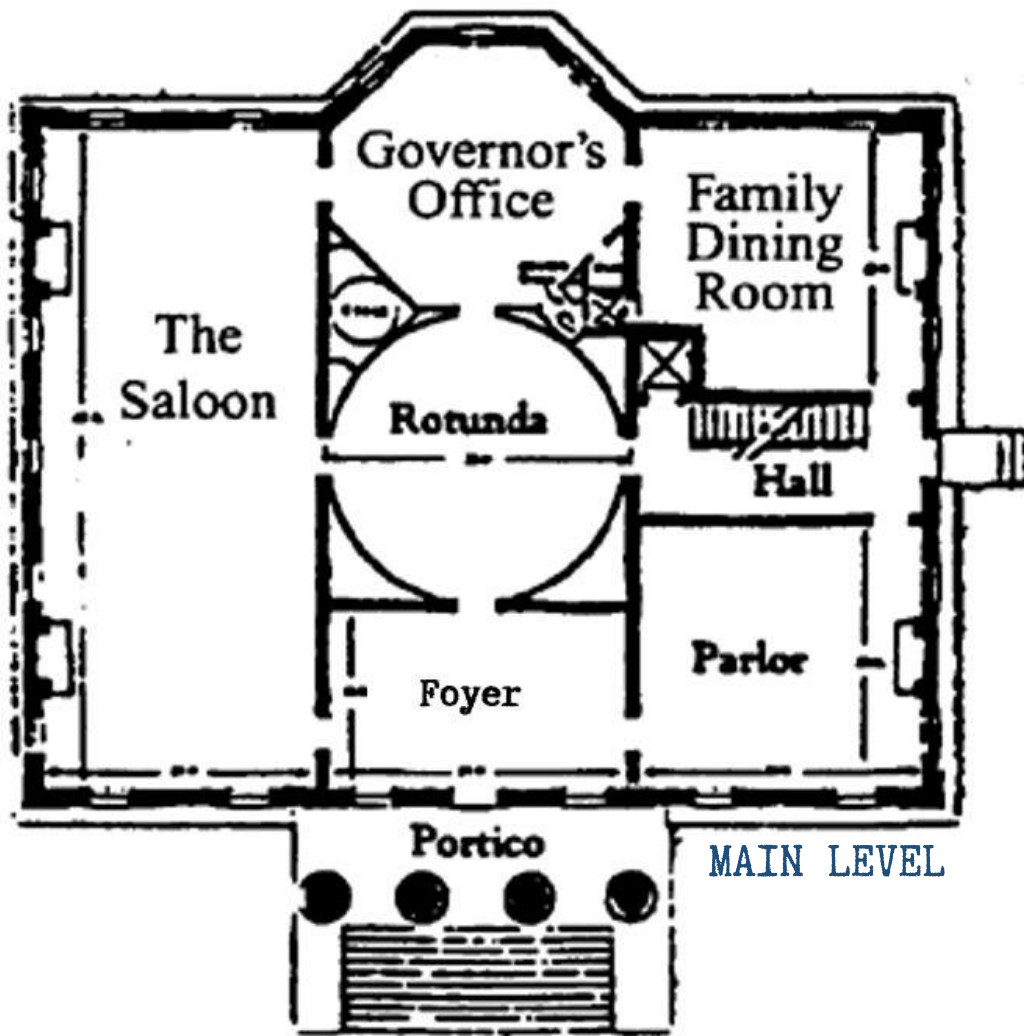


Georgia's
Old Governor's
Mansion

GEORGIA COLLEGE | MILLEDGEVILLE, GEORGIA

- Our street address is 120 S Clarke Street, Milledgeville, GA 31061.
- Most of the Mansion's almost 22,000 square feet is included on our regular, hour tour of the property.
- The 3 floors of the Mansion are accessible by stairs or by an elevator. The Mansion is ADA compliant and handicap accessible. There are limited places to sit on the various floors, the least being on the top level. If you or your group needs a modified tour, please let us know and we will be happy to accommodate your needs.
- Most tours start on the basement level in the Work Room and end on the top level.
- Tours are given on the top of each hour Tuesday to Saturday 10 am to 4 pm and Sunday 2 to 4 pm. The last tour of each day begins at 4 pm.
- Visitors enter the Mansion through the Gift Shop and can purchase tour tickets at the counter.
- There is street parking available off of Clarke and Greene Streets. Busses may park along the curb in front of the Mansion on Clarke Street.
- Bathrooms and a water fountain are located next to the Gift Shop.
- If you have any questions, contact the Mansion at 478-455-4545 or visit gcsu.edu/mansion.





MAIN LEVEL



TOP LEVEL